



FORTUNE & COATES

The People's Estate Agent

<https://www.fortuneandcoates.co.uk>



FORTUNE & COATES



70 Collins Meadow, Harlow, CM19 4EN

Guide price £350,000

Guide Price £350,000-£375,000. Fortune and Coates are delighted to offer to the market this three bedroom family home situated in the centrally positioned location of Collins Meadow.

The family home is set over three floors and is presented to a high standard throughout.

The home comprises an entrance hallway with family bathroom and well proportioned first bedroom and stairs leading upstairs and downstairs.

To the top floor you have two generously sized double bedrooms.

To the ground floor is the lounge which is bright and airy with feature fireplace and french doors that lead out to the rear garden. The kitchen offers a range of wall and base units, some integrated appliance and space for a dining table.

Lounge 14'6" x 11'8" (4.42 x 3.56)

Kitchen 14'6" x 8'4" max (4.42 x 2.56 max)

Bedroom 14'6" x 10'8" (4.42 x 3.27)

Bedroom 14'6" x 9'3" max (4.42 x 2.84 max)

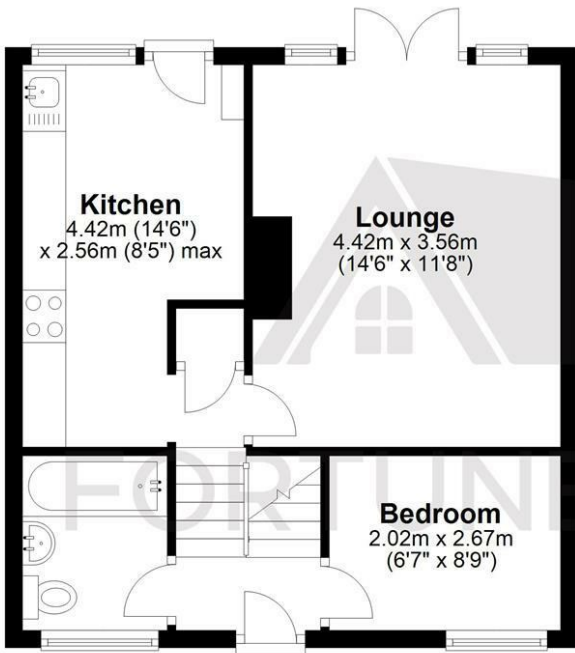
Bedroom 6'7" x 8'9" (2.02 x 2.67)

AGENT NOTE: The information provided about this property does not constitute or form part of an offer or contract, nor may it be regarded as representations. All interested parties must verify accuracy and your solicitor must verify tenure/lease information, fixtures & fittings and, where the property has been extended/converted, planning/building regulation consents. All dimensions are approximate and quoted for guidance only as are floor plans which are not to scale and their accuracy cannot be confirmed. Reference to appliances and/or services does not imply that they are necessarily in working order or fit for the purpose

Floor Plan

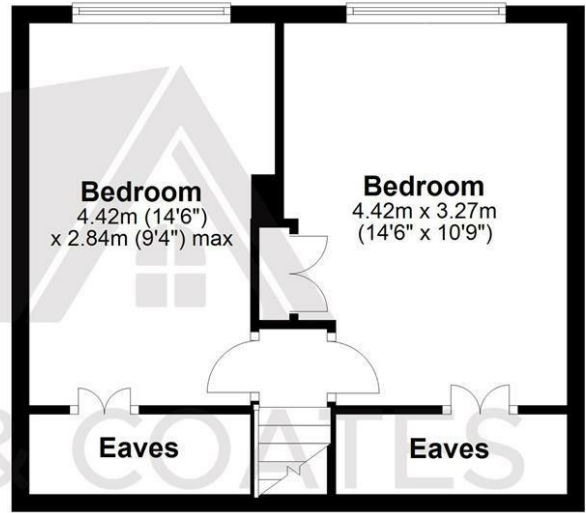
Ground Floor

Approx. 40.6 sq. metres (436.9 sq. feet)



First Floor

Approx. 33.8 sq. metres (363.9 sq. feet)

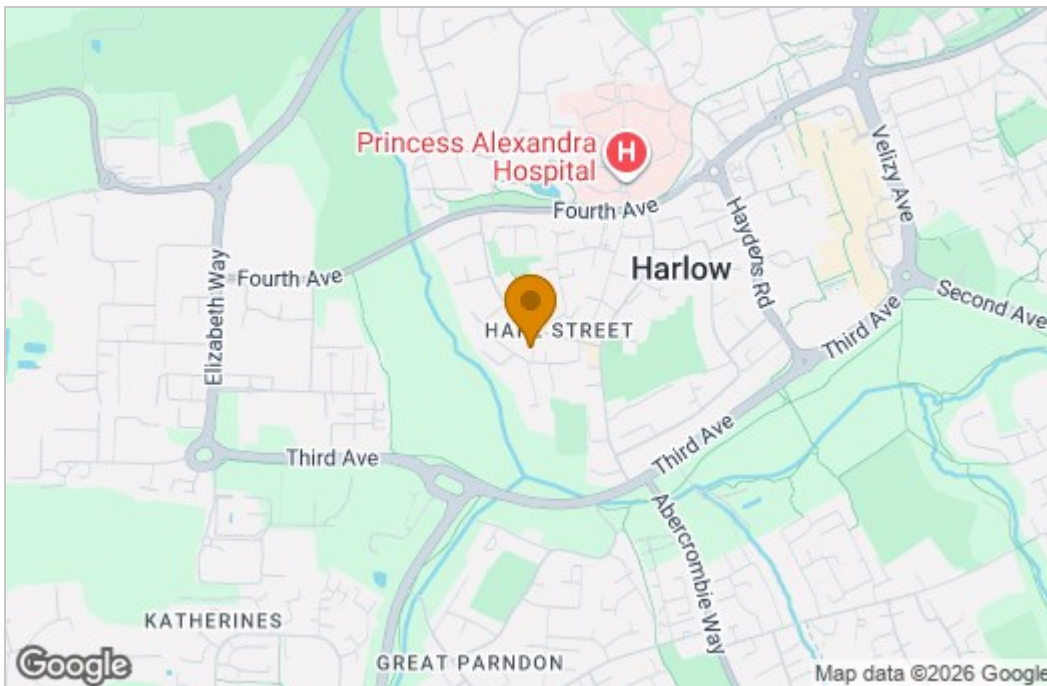


Total area: approx. 74.4 sq. metres (800.8 sq. feet)

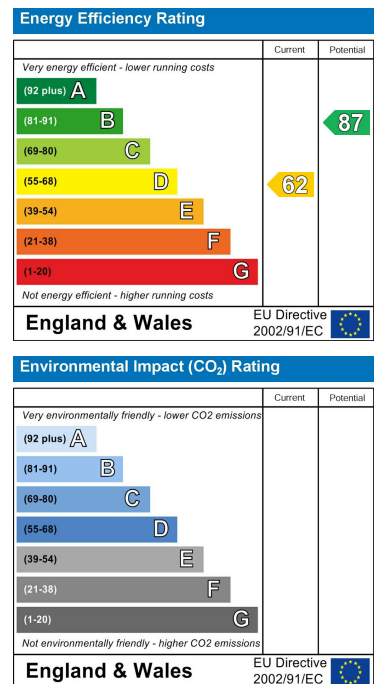
THE FLOORPLAN IS FOR ILLUSTRATIVE PURPOSES ONLY AND IS NOT TO SCALE. Measurements and features are approximate and may differ from the actual property. Verify all details independently; no liability is accepted for errors or omissions.

Property marketing provided by www.fotomarketing.co.uk

Area Map



Energy Efficiency Graph



These particulars, whilst believed to be accurate are set out as a general outline only for guidance and do not constitute any part of an offer or contract. Intending purchasers should not rely on them as statements of representation of fact, but must satisfy themselves by inspection or otherwise as to their accuracy. No person in this firm's employment has the authority to make or give any representation or warranty in respect of the property.